

# KONAMI SYNKROS

## COVID-19 Touchless and Cashless Solutions

Tom Soukup, Chief System Product Officer

# Cashless Wagering Overview

Fully electronic transactions and management



Supports Cashless,  
in addition to Bills-in  
& Ticket-In/Out

Enable / Disable  
Cashless by Patron  
Level & by EGM

Set Cashless Limits  
By Card Tier

PIN Protected

Full access to  
required regulatory  
reports

## Accessibility

Download / Upload  
Cashless Funds  
Directly at EGM or  
Table Game

Deposit / Withdraw  
Cashless Funds at  
Cage & Interfaced  
ATM / TITO Kiosks

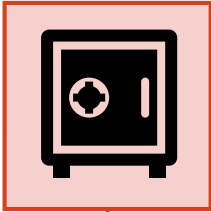
Use Cashless Funds  
at Non-gaming  
Outlets  
via SYNKROS Service Bus (\*)

Deposit / Withdraw  
Cashless Funds at  
other 3<sup>rd</sup> Party  
via SYNKROS Service Bus (\*)

(\*) Requires integration to 3<sup>rd</sup> Party systems

# Cashless Wagering Funding

Options to fit your needs



## Cage

- Deposits & Withdrawals
- Adjustment +/-
- Print Transaction Receipts
- **Optional:** Require player PIN
- **Optional:** Number of PIN entries before locking account
- **Optional:** Approvals based on value deposited/withdrawn



## Slot Machine or Table

- Fund cashless account by inserting bills in the EGM or cash buy-in at Table while actively carded
- Remaining credits are automatically added to the Cashless wagering account upon card out or table walk-with



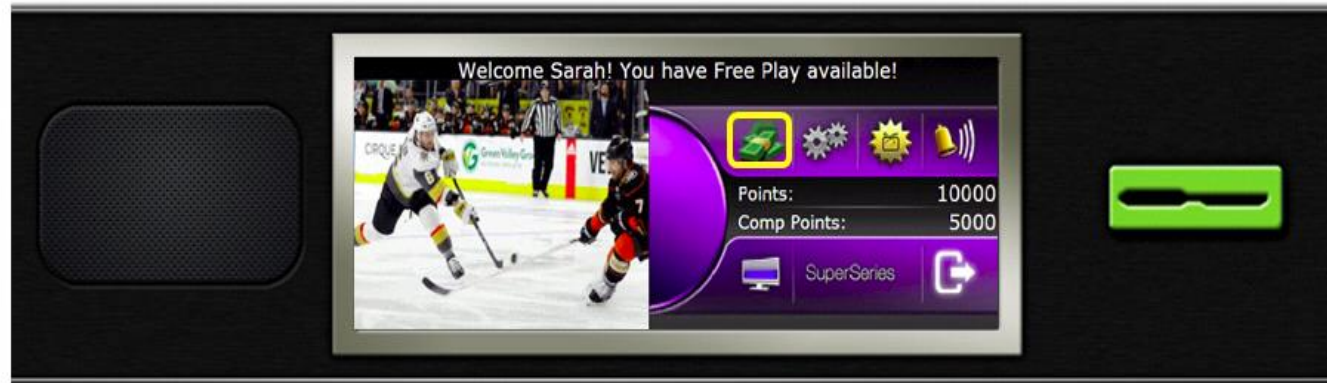
## Kiosk or 3rd Parties

- TITO Kiosks Deposits & Withdrawals
- 3<sup>rd</sup> Party Deposits & Withdrawals (other e-wallets) via through SYNKROS Service Bus
- Charge to Hotel Folio through SYNKROS Service Bus

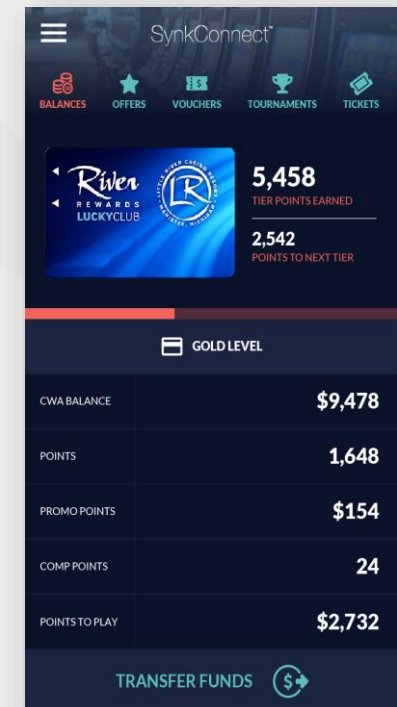
# Cashless Solutions

## Player Tracking Display or Mobile Experience

Step 1: Select Cash Button



Step 2: Select Money Klip Button



# Cashless Solutions

## Player Tracking Display Experience (Cruise Industry)

- Guest manifest (Hotel system) loaded into SYNKROS
- Players provided Room Key/Player Card or NFC wrist band
- “Folio Charge Button” is added to the Player Tracking Display
- Player can make “Room Charges” to their credit card on file (Hotel system)
- End-of-Cruise, any remaining Cashless Balance credited back to their Folio (Hotel system)





# Cashless Solutions

## Player Table Games Experience

- Player Buys In: Cashless Wagering Account Withdrawals
- Player Walk With: Cashless Wagering Account Deposits

**Cashless Wager**

Search Reports Tools History  
Save Clear Delete Find Find Again Wizard Help

Cashless Wager Micro Report

Patron: Allan, Amber KK  
Patron ID: 20010864  
AML Code: None  
Status Code: None  
Account Number: 20010688

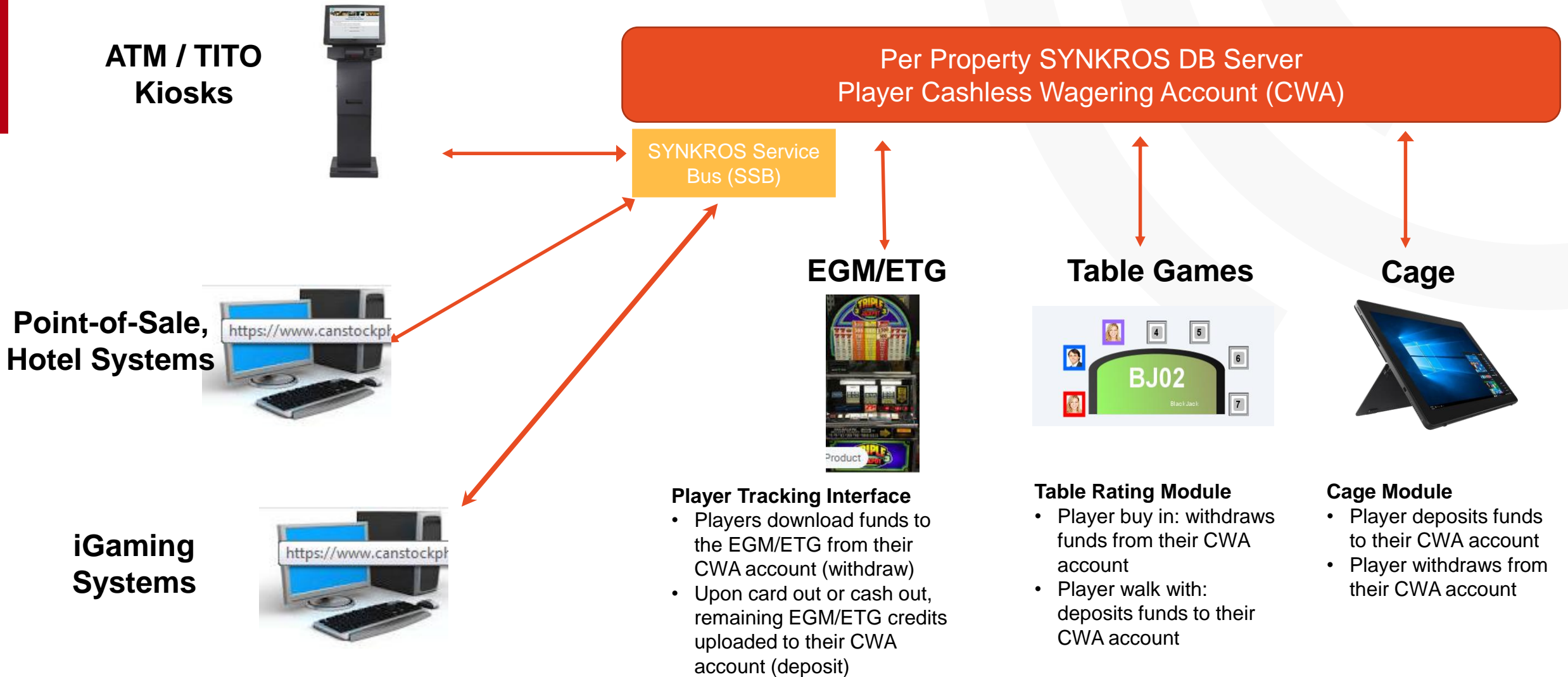
Repository: Chip Bank

MarkerTrax: \$1,000.00  
Used: \$0.00  
Available: \$1,000.00

CWA Functionality:  
Enable Patron CWA Disable Patron CWA Deposit From MarkerTrax MarkerTrax Payment

Withdrawal		Type	Currency	Value	Negative Adjustment	
Total Balance:	\$1,100.00	Soft	US Dollars		Total Balance:	\$1,100.00
Minus Used Credit:	\$0.00	Hard	US Coins		Negative Adjust:	\$0.00
Balance Available:	\$1,100.00	Chip	Foreign Chip		Ending Balance:	\$1,100.00
Withdrawal:	\$0.00	Chip	Casino Chips		Negative Adjust	
Ending Balance:	\$1,100.00	Cash Equivalent	Travellers Check		Positive Adjustment	
Withdrawal		Cash Equivalent	Personal Check		Total Balance:	\$1,100.00
Deposit		Cash Equivalent	Bingo Voucher		Positive Adjust:	\$0.00
Total Balance:	\$1,100.00	Cash Equivalent	Scratch Tickets		Ending Balance:	\$1,100.00
Deposit:	\$0.00	Cash Equivalent	Solid Bills		Positive Adjust	
Ending Balance:	\$1,100.00	Cash Equivalent	Bank official check		Total Balance:	\$1,100.00
Deposit		Cash Equivalent	Casino Check		Positive Adjust:	\$0.00
Withdrawal		CPV	CPV		Ending Balance:	\$1,100.00
Deposit		FM	FM Currency		Positive Adjust	
Withdrawal		Marker	Marker Currency		Total Balance:	\$1,100.00
Deposit		Coupon	Foreign Promo Voucher		Positive Adjust:	\$0.00
Withdrawal		Coupon	Promo Voucher		Ending Balance:	\$1,100.00
Deposit					Positive Adjust	

# Cashless Resort Eco-system



# Cashless Wagering

## ATM / TITO Kiosk Example



Per Property SYNKROS DB Server  
Player Cashless Wagering Account (CWA)

SYNKROS Service Bus (SSB)



### Player Deposit

***Versus dispensing physical cash, deposit funds into the player's CWA***

1. Player inserts their debit card, credit card, etc.
2. ATM process the cash transaction as normal
3. **ATM prior to dispensing physical cash asks "Do you want cash or to fund your CWA?"**
4. If cash, then dispenses physical cash
5. **If CWA, ATM prompts player to insert their player card & enter their PIN**
6. **ATM issues the "Validate Card" & "Validate PIN" SSB commands**
7. **ATM issues the "CWA Deposit" SSB command**
8. ATM prints optional receipt (**stating funds uploaded to CWA**)

RED indicates new processes

BLACK indicates existing processes



# Cashless Wagering

## ATM / TITO Kiosk Example



Per Property SYNKROS DB Server  
Player Cashless Wagering Account (CWA)

SYNKROS Service Bus (SSB)



### Player Withdrawal

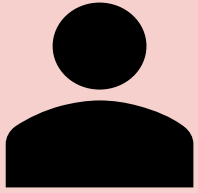
*Dispense physical cash for player's CWA balance*

1. ATM adds option Cashless Wagering Cash-Out to the main screen
2. ATM prompts player to insert their player card & enter their PIN
3. ATM issues the "Validate Card" & "Validate PIN" SSB commands
4. ATM issues the "CWA Inquiry" SSB command & displays the available Cashless Wagering balance
5. If > \$0, ATM issues the "CWA Withdraw" SSB command & dispenses physical cash
6. ATM prints optional receipt for the physical cash disbursement cash-out of players CWA balance

RED indicates new processes

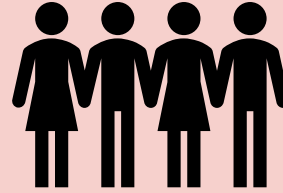
BLACK indicates existing processes

# Cashless Wagering Benefits



Patron

- Reduces need to carrying cash, handling physical cash or paper vouchers
- Empowers patrons to enjoy secure cashless wagering



Staff

- Reduces ticket paper fills & ticket jams to clear per day
- Reduces TITO Kiosk cash fills
- Reduces emergency cash can drops & frequency of cash/ticket drops
- Reduces ticket cash-outs & cash handling at the cage
- Reduces Count & Drop Accounting times



Take action  
with  
**SYNKROS.**

**KONAMI**